

EDENBRIDGE-HUMBER VALLEY

6A EDENBROOK — HILL —





TRANSPARENCY PAGE

AMBLER REAL ESTATE TEAM



REAL ESTATE TEAM
AMBLER

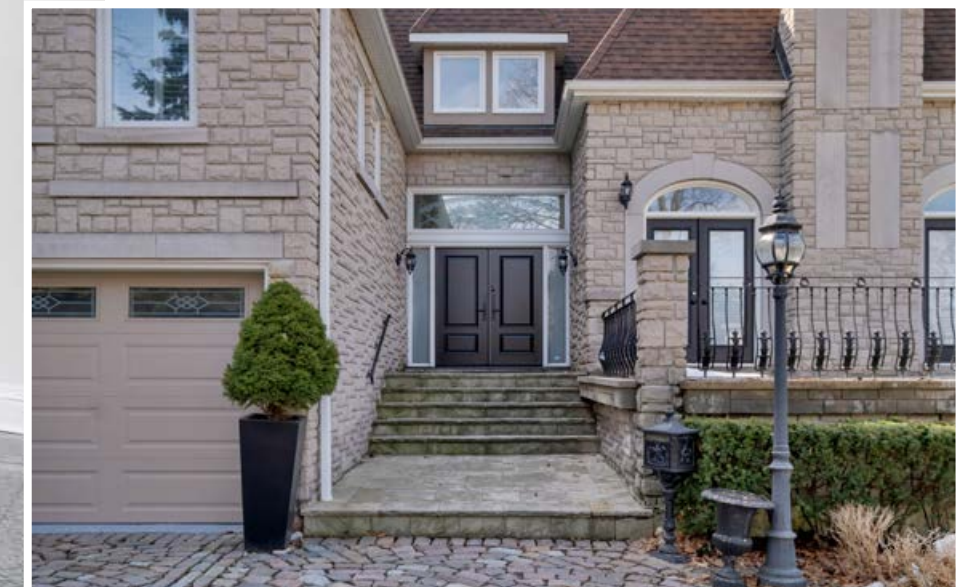




TIMELESS ELEGANCE OVERLOOKING PRESTIGIOUS ST GEORGES GOLF & COUNTRY CLUB

A Lincoln wood masterpiece of timeless design in an irreplaceable location offering stunning views of St Georges Golf & Country Club. This impeccably thoughtful stone estate is situated in one of Toronto's most coveted enclaves overlooking one of Canada's most prestigious golf and country clubs. The stately 4+ 1 bedroom with 7 bath layout offers truly timeless elegance with an "almost" main level primary bedroom providing a contemporary feel throughout the 8600 sqft of living space.

Set on a manicured, tree lined lot with an incredible set back from Edenbrook hill, the private circular cobble stone drive welcomes you to a 3 -car garage and an exterior that exudes a European, Chateau inspired architectural feel. Inside, discover soaring ceilings, herringbone hardwood floors and an elegant formal dining space overlooking a sun-drenched front living space that offers a walk out to a front terrace. The home offers a perfect work from home set up with a spacious office/library and custom built in cabinetry and shelving and contemporary kitchen with luxurious chefs quality appliances which over-look the 3rd hole of the Golf Course. It will not be missed that it is the panoramic windows in the family room that continue to the loft that frame the lush fairway views capturing anyone's attention almost immediately.

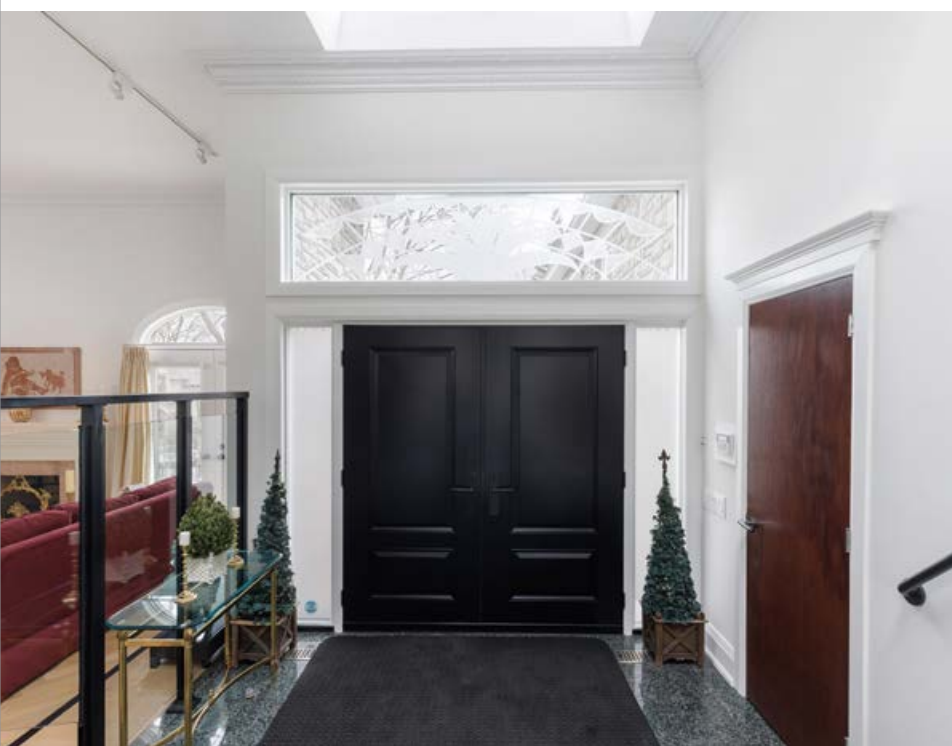
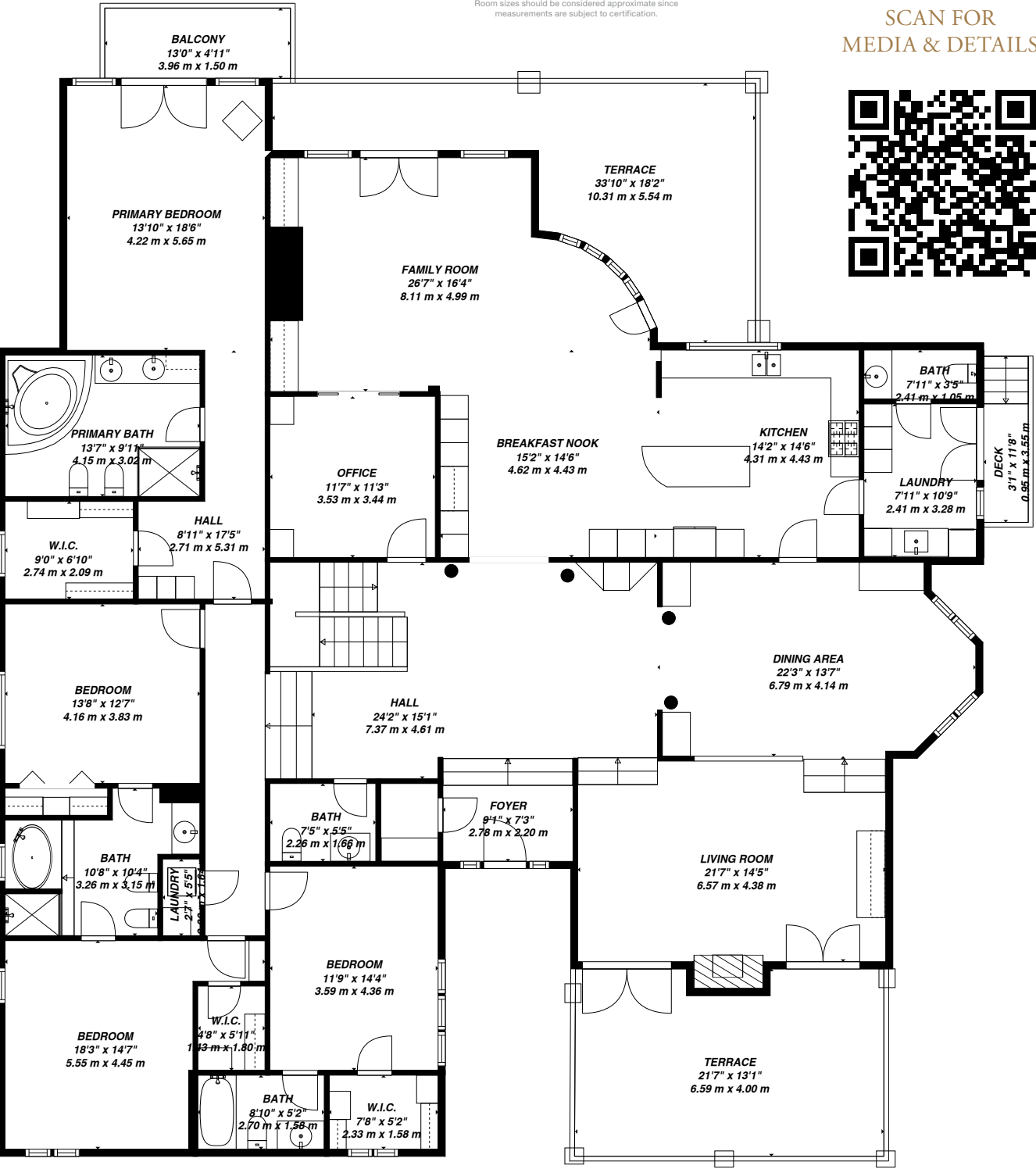


MAIN LEVEL

3,827 SQ. FT.

Room sizes should be considered approximate since measurements are subject to certification.

SCAN FOR
MEDIA & DETAILS

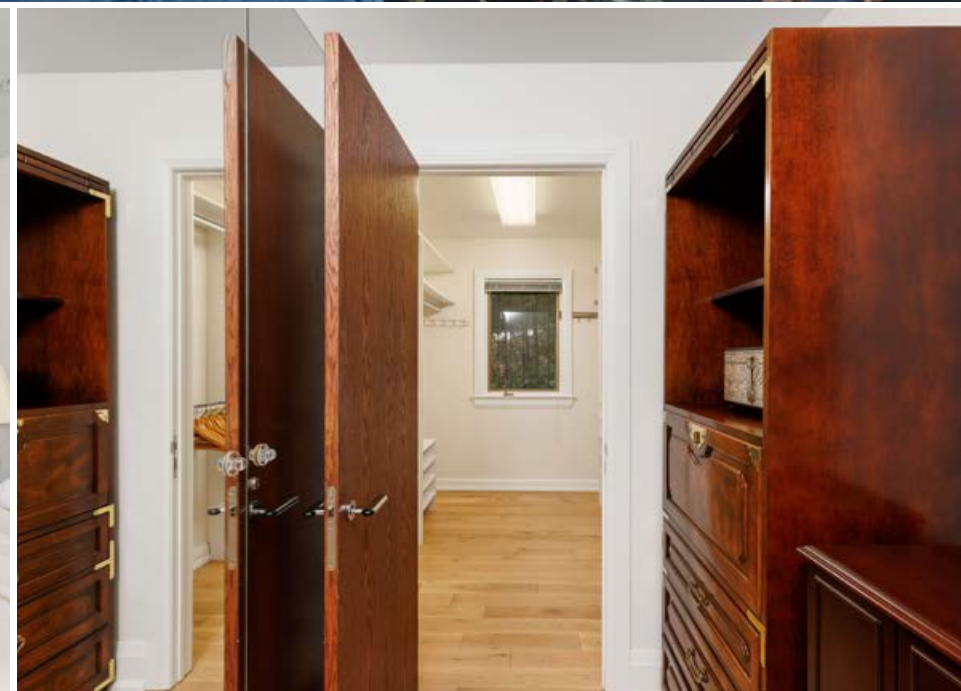


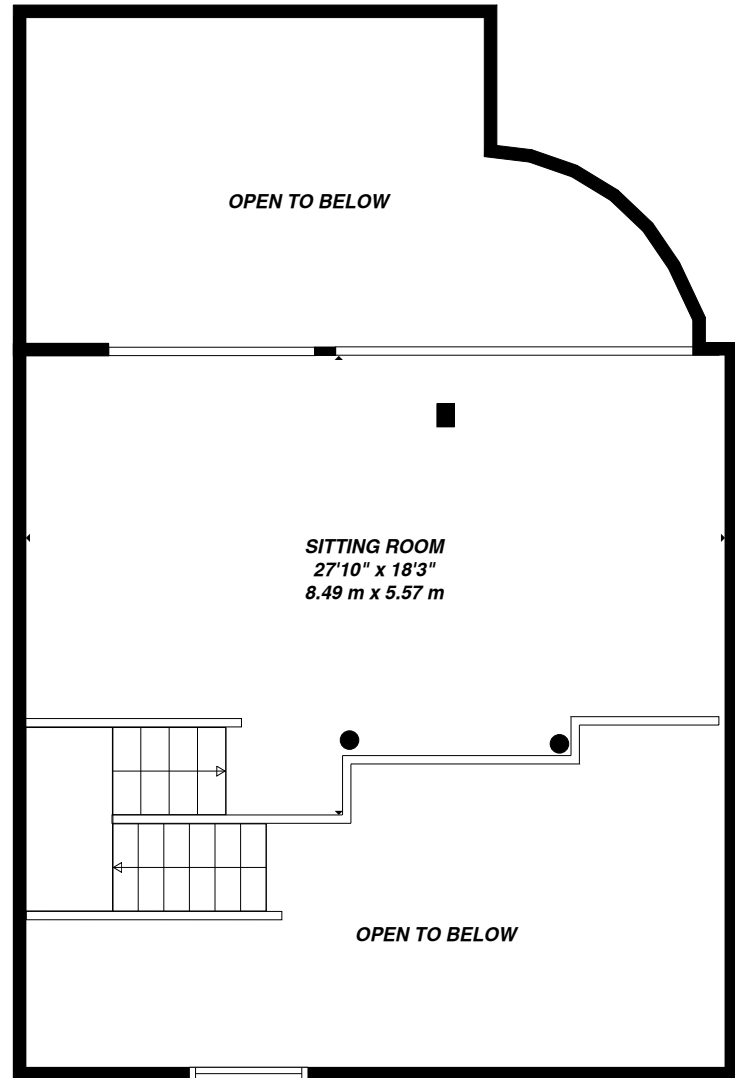
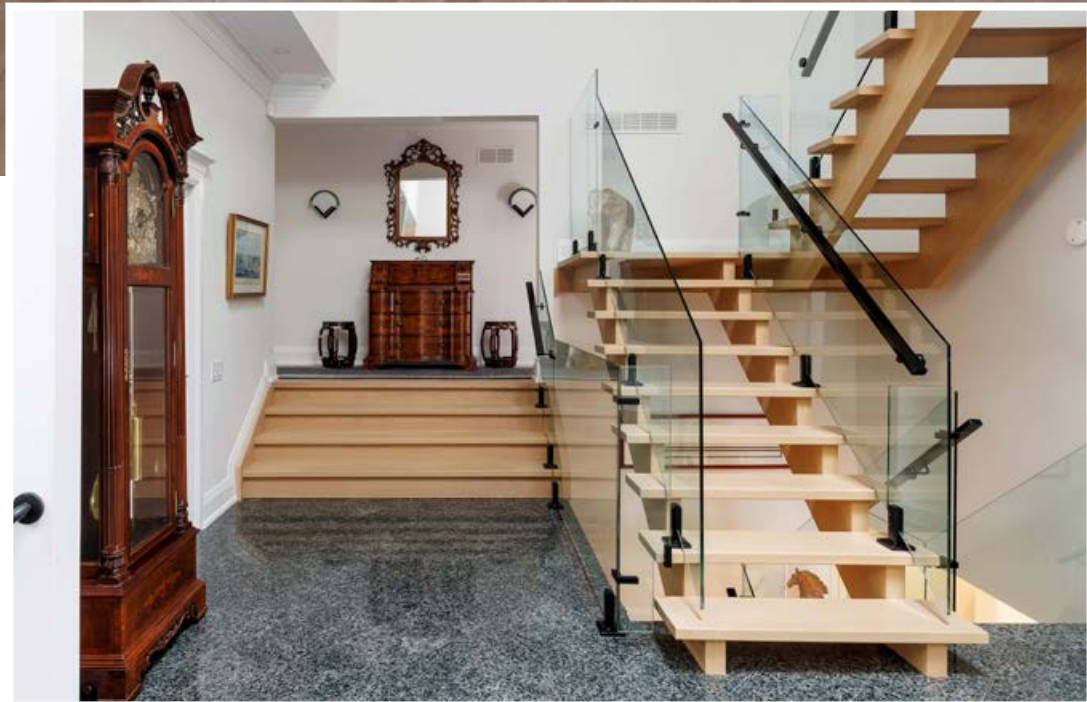












SECOND LEVEL

1,156 SQ. FT.

Room sizes should be considered approximate since measurements are subject to certification.



SCAN FOR MEDIA &
DETAILS. OR VISIT
6AEDENBROOKHILL.COM



DETAILS & FEATURES

MAIN LEVEL

FOYER

- Grand open concept entrance with soaring 20-foot ceiling with pot lighting
- Custom mill work and columns with emerald marble floor
- Large skylights
- Coat closet at entrance way
- New glass balustrade staircase & oak stairs

POWDER ROOM

- 2 piece powder room with black oyster porcelain vanity
- Black toilet with wall floor to ceiling mirror

LIVING ROOM

- Sunken seating space
- New wide oak hardwood floor with Herringbone design
- Crown Moulding
- Wood burning fireplace with marble finish
- Track Lighting
- Double door Walk-out to Front Terrace overlooking front garden

DINING ROOM

- Custom crown Moulding
- Banquet sized Dining area continued with emerald marble flooring
- Build-in shelves with accent pot lighting
- Bay window with additional accent lighting

KITCHEN

- High gloss kitchen cabinets & drawers
- Chefs kitchen layout with professional oversized oven hood
- Wolf range with 4 burner top including griddle
- Jenn Air convertible Gas Grill
- Sub-zero refrigerator
- Triple stainless steel sink with garburator
- Miele Dishwasher & Miele Built in oven
- Oversized skylight providing abundance of natural light
- Granite Counter tops
- Intercom system
- California Shutters overlooking 3rd green
- Centre Island with granite counters & breakfast bar
- Breakfast area

FAMILY ROOM

- Miele Built-In Oven
- Wolf Range Oven with 4 Burner Gas Stovetop and Griddle
- Jenn-Air Convertible Gas Grill
- Sub Zero Refrigerator
- Triple Sink with Garburator
- Miele Dishwasher
- New wide oak hardwood floor
- Pot lights with California shutters & walk out to stone terrace.
- Porcelain Feature Wall
- High Ceiling with customs built-In shelving/cabinets
- Walk-out to rear terrace overlooking the back yard and St Georges Golf Course

OFFICE & DESK NICHE

- New wide oak plank hardwood flooring
- Custom built-In shelves with cabinets
- Sliding Double Door positioned between the family room and front foyer

LAUNDRY ROOM

- Built-In Cabinets
- Laundry Sink
- Stacked Maytag Washer & Dryer
- Jenn Air Compactor
- Side Entrance
- 2 Piece Bath

PRIMARY BEDROOM WING

- New wide plank Oak hardwood Flooring
- Pot Lights
- French Doors with walk out to terrace
- Intercom
- California Shutters
- Walk-Out to Balcony
- Overlooks Golf Course
- Walk-In Closet with Built Ins

PRIMARY ENSUITE

- 6 Piece Ensuite
- Bright Skylight
- Pot Lights
- His & Hers Sinks
- Bidet
- Almico Jacuzzi Tub
- Glass Stand Up Shower
- Infrared Heater Light
- 3 Intermatic Switches

SECOND BEDROOM

- New wide plank Oak hardwood Floor
- California Shutters
- Storage Cubby
- Walk-In Closet with Built-Ins
- Overlooks Front Garden

JACK & JILL ENSUITE

- 5 Piece Ensuite
- Combined Tub & Shower with Glass Door
- California Shutters

THIRD BEDROOM

- Hardwood Floor
- Crown Moulding
- California Shutters

FOURTH BEDROOM

- Hardwood Floor
- California Shutters
- Intercom
- Double Closet with Built-Ins
- 4-piece ensuite bathroom

UPPER LEVEL/ LOFT SPACE

- New wide plank Oak hardwood floor
- Accent pot lighting with columns
- Stunning loft views overlooks St Georges Golf Course

RECREATION ROOM/ ENTERTAINMENT LOUNGE

- Updated wet bar with accent wall and games table
- Billiards area
- 2 double door Walk outs to rear garden overlooking St Georges Golf Course
- Pot Lights throughout
- Full coverage California shutters
- Wet Bar with Whirlpool Mini Fridge
- Open Concept Games Room and Dining Area

LOWER LEVEL KITCHEN

- Sunken kitchen layout with tile flooring
- Old world brick feature wall with wood storage and hot stone cooking area
- Island with Granite Counter
- Above Grade Window
- Walk-In Storage Closet with Sink & Pantry Closet
- Double Sink with Garburator
- Amana Refrigerator
- Chambers 4 Burner Gas Stove Top
- Frigidaire Built-In Oven with Hood Range
- Maytag Dishwasher

GYM

- Tile Floor with Sauna
- French Doors
- Feature Mirror Wall
- Sauna & 3 Piece Bath

LOWER LEVEL BEDROOM

- New wide plane oak hardwood floor
- Double Closet
- Above Grade Window
- Track Lighting

- Intercom
- 4 Piece Ensuite
- 1 Intermatic Switch

WINE CELLAR

- Old world brick accent wall with tile flooring
- Custom Built-In Cabinets and shelving
- Double closets

LOWER LEVEL

- Garage Access with 3 car garage
- Epoxy garage flooring
- 2 Hallway Closets

WORKSHOP/ FURNACE ROOM/ ELECTRICAL ROOM

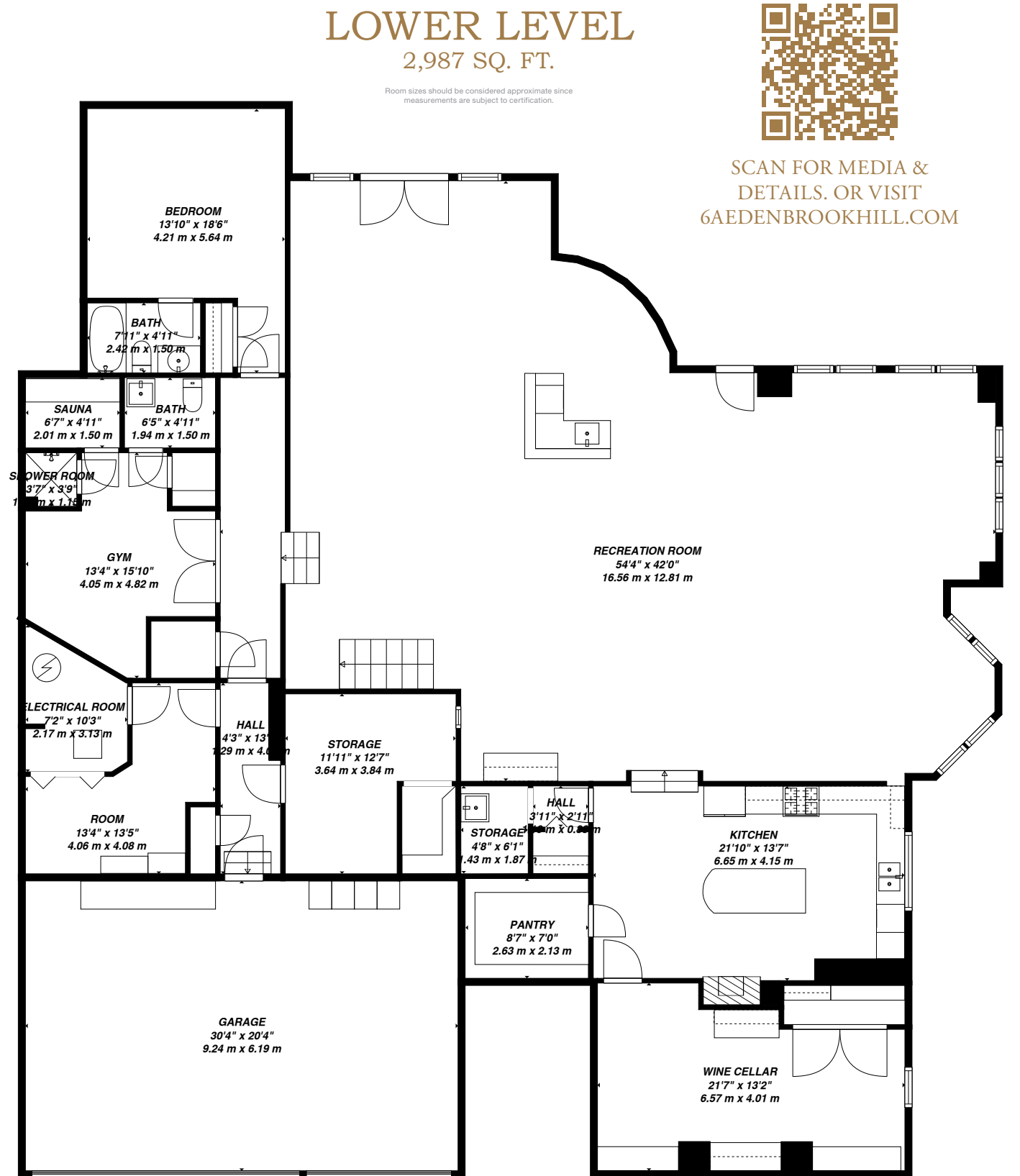
- Tile Floor
- 200 amp Electrical
- Humidifier & Lennox HVAC

- 4 + 1 Bedrooms
- 2 Laundry
- 7 Baths
- Multi-Room Audio System
- Alarm System
- Irrigation System

LOWER LEVEL FEATURES A WALKOUT TO THE BEAUTIFUL BACKYARD

Perfect for entertaining, the lower level is complete with a billiards area, casual dining and games table with walk out access to the back yard with a sauna for ultimate relaxation. Each bedroom offers its own serene retreat with privacy and natural light.







NUMEROUS TERRACES FROM THE FRONT OF THE HOME TO THE REAR WITH IMPECCABLE VIEWS OF ST GEORGES GOLF COURSE

Numerous terraces from the front of the home to the rear offer an outdoor retreat and the backyard is tree-lined shaping impeccable views of the Golf Course at any time of day. Enjoy tranquil evenings or morning coffee on the upper balcony or host gatherings on the expansive lower patio all with the backdrop of one of Canada's most prestigious Golf Courses. One does not have to be a golf enthusiast to fall in love with the views at 6A Edenbrook Hill.



FOR CANADIAN GOLF, ST GEORGES GOLF & COUNTRY CLUB RANKS AMONG THE TOP!

Ranked consistently among the top golf courses in Canada and the world. St Georges Golf & Country Club is a crown jewel of Toronto's west end. Designed by legendary architect Stanley Thompson in 1929, this par – 71 championship course is renowned for its strategic layout, immaculate conditioning and stunning parkland setting.

A five-time host of the RBC Canadian Open, St Georges blends tradition and prestige with world -class amenities, including an elegant clubhouse, fine dining, and a vibrant social community. Living alongside this iconic course offers not only breathtaking views but also the serenity that comes with the living on one of the most prestigious Golf Courses in Canada.







SUMMER PHOTOS



AMBLER REAL ESTATE TEAM

RE/MAX PROFESSIONALS INC.

BROKERAGE INDEPENDENTLY OWNED & OPERATED
1 EAST MALL CRESCENT, TORONTO, ON M9B 6G6 416.232.9000

416.884.8027

PAULAMBLER.COM

