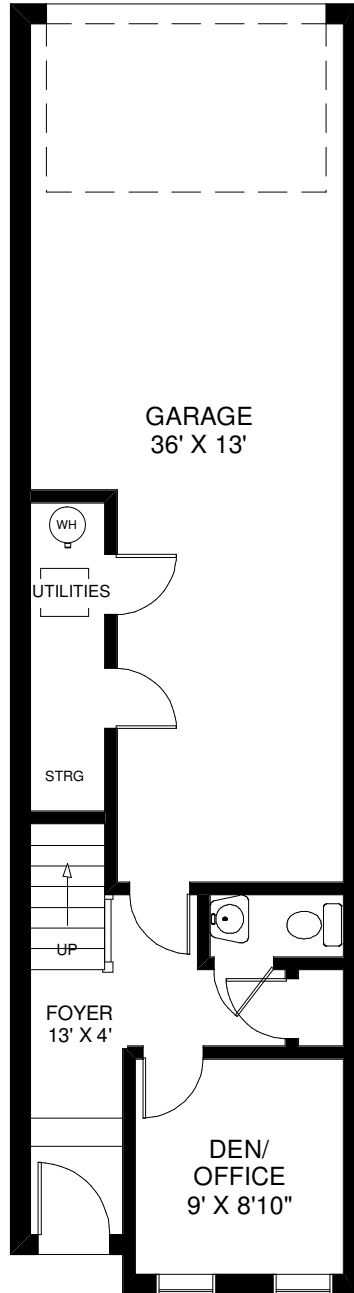
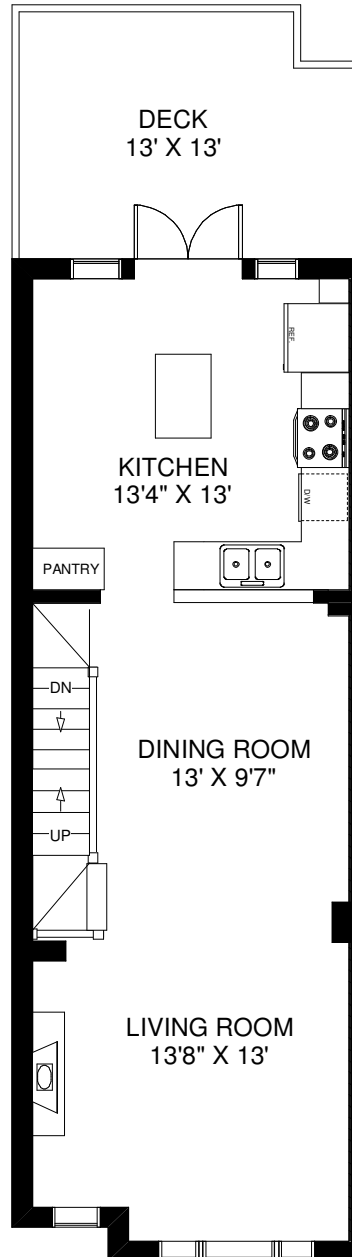


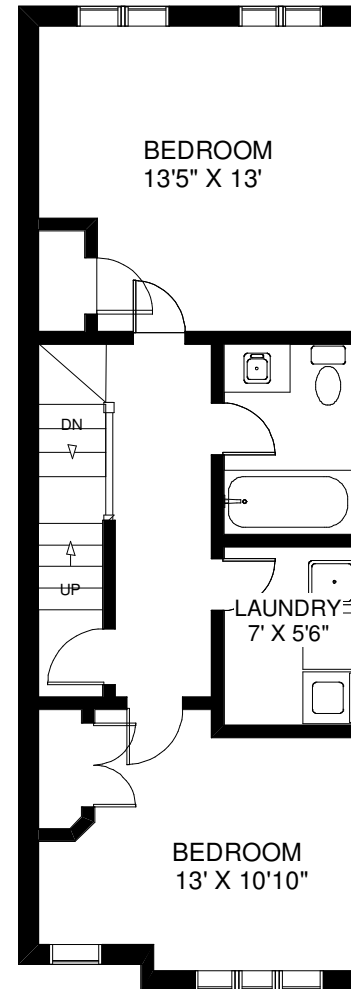
825A OXFORD STREET



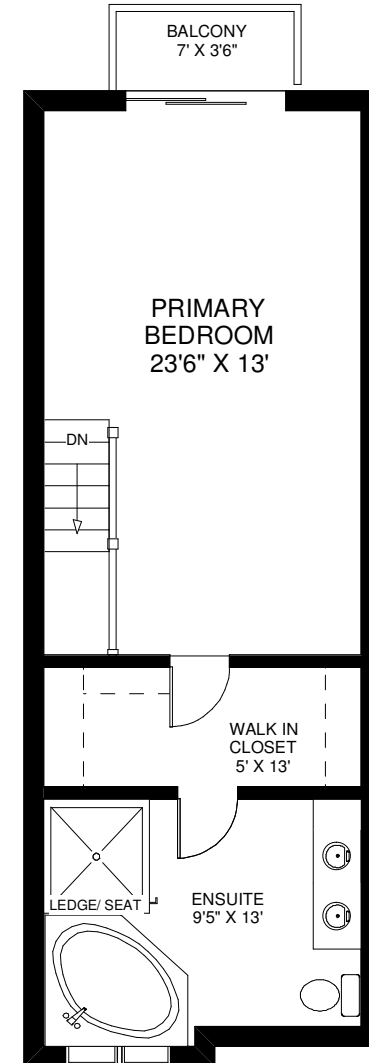
CEILING HT 8'5"
ENTRY LEVEL
APPROXIMATELY 300 SQ FT



CEILING HT 9'
MAIN LEVEL
APPROXIMATELY 600 SQ FT



CEILING HT 8'
SECOND LEVEL
APPROXIMATELY 600 SQ FT



CEILING HT 9'
THIRD LEVEL
APPROXIMATELY 600 SQ FT