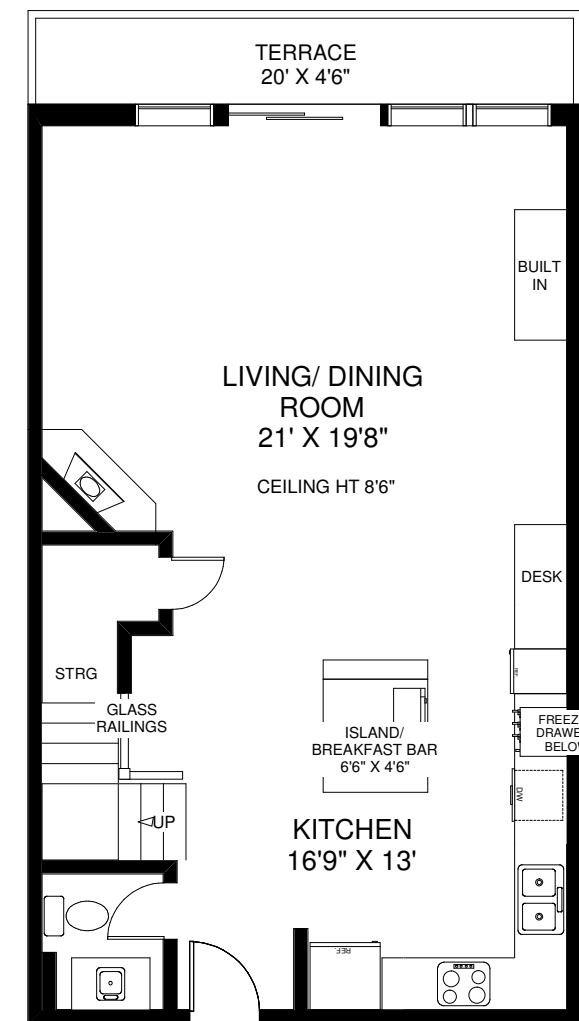


— 71 —
OLD MILL
Road

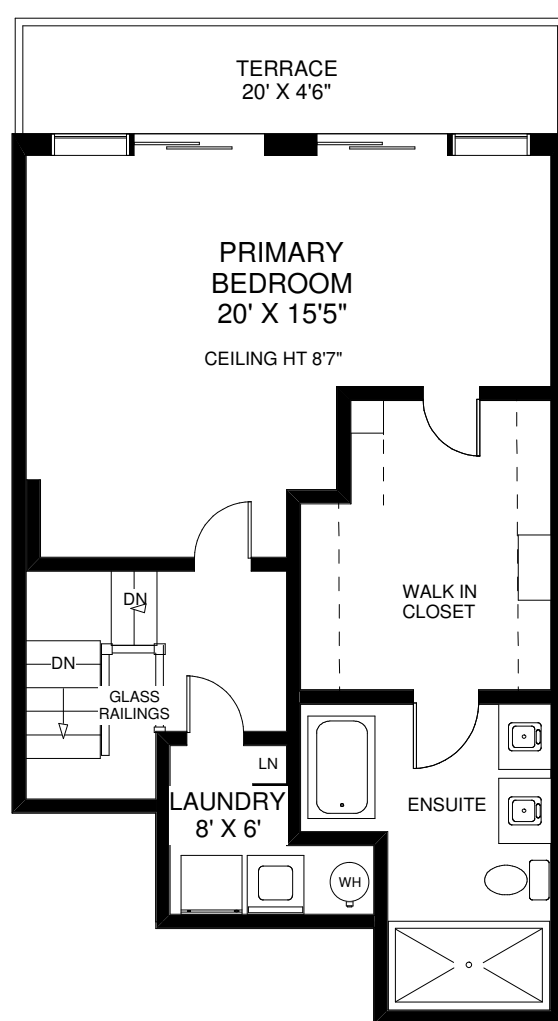
SUITE 304

The Kingsway, Etobicoke





MAIN FLOOR



SECOND FLOOR

APPROXIMATELY 1,400 SQ FT

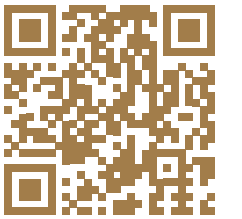
Note: Measurements & Calculations are approximate.
Provided as a guideline only.



TIMELESS CHARM MEETS CONTEMPORARY LIVING

Nestled within the prestigious Old Mill Terrace, this spacious two-storey suite offers a perfect blend of timeless charm and modern design. The stately exterior reflects the character of The Kingsway, while inside, contemporary finishes create a serene and stylish retreat. The main level is bright and airy, with floor-to-ceiling windows that frame leafy views and fill the space with natural light. A sleek, modern kitchen anchors the open living area, which opens onto a private balcony, perfect for morning coffee or relaxing outdoors. Upstairs, the primary suite is a true sanctuary, featuring its own private balcony, an expansive walk-through closet and a spa-like five-piece ensuite with oversized shower and deep soaking tub. Located in an intimate boutique building, you're just steps from The Old Mill subway, the Humber River trails, and Etienne Brulé Park. Bloor Street's shops, cafés, and dining are a short stroll away, with easy access to the QEW and Gardiner Expressway. Enjoy the best of both worlds of a peaceful, nature-filled setting with the convenience of city living.

SCAN FOR
MEDIA & DETAILS



DETAILS & FEATURES

MAIN LEVEL

FOYER

- Hardwood floor
- Pot lights
- 2 piece powder room
- Marble staircase to second floor with glass balustrade

KITCHEN

- Hardwood floor
- Coffered ceiling
- Pot lights
- Open concept
- Marble counter tops
- Gourmet prep sink with InSinkErator
- Island with storage
- Built-in KitchenAid microwave
- Intergrated Thermador column refrigerator
- Two Sub Zero freezer drawers
- Built-in Thermador wine cooler
- Built-in KitchenAid oven

DINING ROOM

- Hardwood floor
- Pot lights
- Open concept
- Combined with living room
- Built-in desk with marble top

LIVING ROOM

- Hardwood floor
- Coffered ceiling
- Multiroom home audio system
- Open concept
- Combined with dining room
- Built-in entertainment and shelving unit
- Walk-out to west facing terrace
- Wall-to-wall floor-to-ceiling windows with california shutters
- Built-in woodburning fireplace and mantle

SECOND LEVEL

PRIMARY BEDROOM

- Hardwood floor
- Crown moulding
- Wall-to-wall floor-to-ceiling windows with california shutters
- Walk-out to west facing terrace
- Expansive walkthrough closet with built-ins
- 5 piece spa-like ensuite
 - Heated floors
 - Dual vanity
 - Glass enclosed rainfall stand-up shower
 - Freestanding soaker tub

LAUNDRY

- Tile floor
- Whirlpool Cabrio Platinum washer and dryer

AMBLER REAL ESTATE TEAM

RE/MAX PROFESSIONALS INC.

BROKERAGE INDEPENDENTLY OWNED & OPERATED

1 EAST MALL CRESCENT, TORONTO, ON M9B 6GB • 416.232.9000

416.884.8027

AMBLERTEAM.COM

Not intended to solicit Sellers or Buyers currently under written contract with another Realtor. This brochure is prepared and issued in good faith and is intended to give a fair summary of the property. Any information given should not be relied upon as a statement of fact or that the property is in the same condition. The photographs show only certain parts of the property at the time they were taken. Reproduction of materials from this brochure, in whole or in part is prohibited except with written permission from Imaginahome Inc. Text provided by the Realtor®. ©2025 Imaginahome Inc. 416.757.5100



