

28 AYLESBURY ROAD

# AMBLER

REAL  
ESTATE  
TEAM

RE/MAX Professionals Inc., Brokerage  
(416) 232-9000

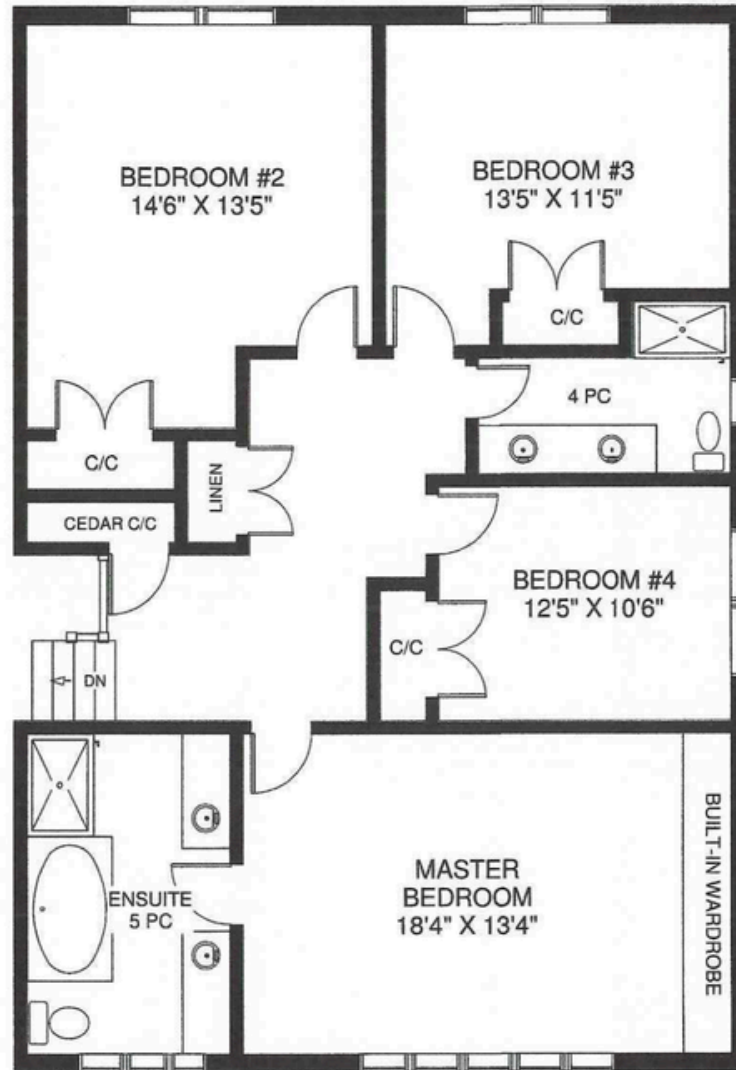


MAIN FLOOR  
APPROXIMATELY 2,339 SQ FT

Note: Measurements & Calculations are approximate. Provided as a guideline only.

**Marketed by Paul Ambler**  
Ambler Real Estate Team  
Team Lead, Sales Representative  
For more information, please contact  
paul@amblerhomes.com or 416-884-8027

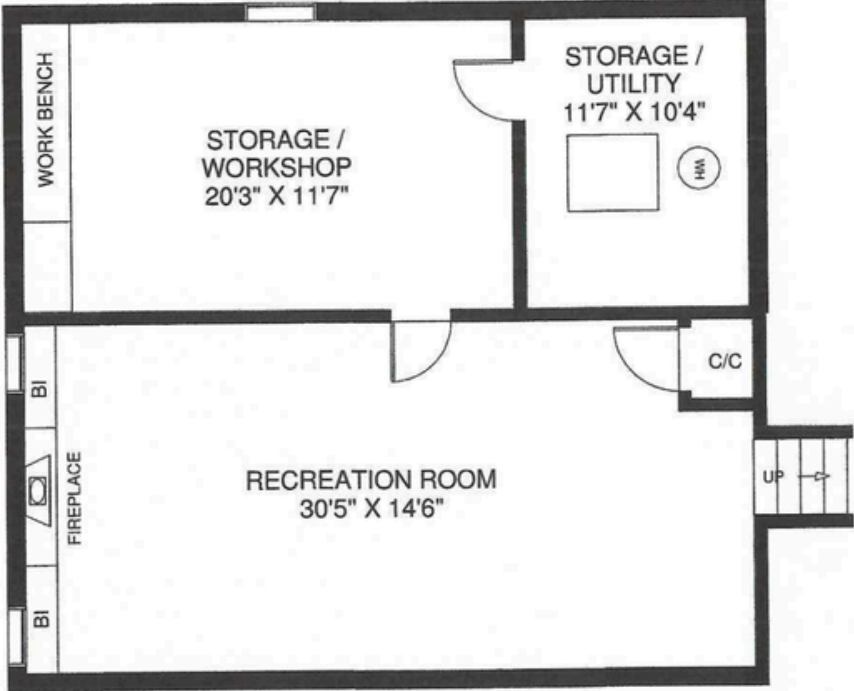
# 28 AYLESBURY ROAD



SECOND FLOOR  
APPROXIMATELY 1,349 SQ FT

Note: Measurements & Calculations are approximate. Provided as a guideline only.

# 28 AYLESBURY ROAD



LOWER FLOOR  
APPROXIMATELY 919 SQ FT

Note: Measurements & Calculations are approximate. Provided as a guideline only.